

# Stopper cylinder



## TWQ Series



### Specification

Bore size(mm)	20	25	32	40	50
Fluid	Double acting type、Single acting-pull type				
Action	Air(to be filtered by 40 μ m filter element)				
Operating pressure	0.15~1.0MPa(23~145psi)				
Proof pressure	Φ20: 0.25~1.0MPa(35~145psi) others: 0.2~1.0MPa(28~145psi)				
Temperature °C	-20~80				
Range of stroke tolerance	+1.0 0				
Cushion type	Bumper				
Lubrication	Non required				
Mounting type	Thru hole or screw hole				
Stopper type	Round rod, Flat rod/Roller		Round rod, Flat rod/Roller, Shock less stopper(with absorber)		
Port size ①	M5×0.8		1/8"		

① PT thread, NPT thread and G thread are available. Add) Refer to Page 403~426 for details of sensor switch.

### Symbol



### Product feature

- JIS standard is implemented.
- Widening the piston rod can effectively improve the impact resistance ability of the cylinder.
- The installation height is adjustable and several rod end modes can be selected. The stopper cylinder with shock absorber has a better cushion effect.
- Shockless stopper cylinder is attached with self-lock device, which can prevent the returning of rebound of rocker caused by bar objects.
- Several series and specifications for stopper cylinders can be selected.

### Ordering code

Model can to be changed Ordering code. Example:

Production type: TWQ  
Magnet: With magnet  
Bore size: 50mm  
Stroke: 30mm  
Stopper: Shockless stopper(adjustble absorber)  
Self-lock function: With self-lock  
Thread type: NPT

**Model: TWQ-S-50 × 30-KF-T**

**Ordering code: TWQ S 50 K F 0030 T**

Model	Magnet	Bore size	Stroke	Self-lock function	Stopper	Thread type
	Blank: Without magnet S: With magnet	20: Φ20mm 25: Φ25mm 32: Φ32mm 40: Φ40mm 50: Φ50mm	In 4 digits	Blank: Without self-lock F: With self-lock	C: Round rod B: Flat rod R: Roller K: Shockless stopper (adjustble absorber)	P: PT T: NPT G: G



### Example of model

**TWQ-S-50 × 20-K□-P**

Model	Thread type	Self-lock function	Stopper
TWQ: Stopper cylinder (Height locked, double acting type)	P:PT T:NPT G:G	Blank:Without self-lock F:With self-lock	C: Round rod B: Flat rod R: Roller K: Shockless stopper (adjustble absorber)
TTQ: Stopper cylinder (Height locked, single acting-pull type)			
Magnet			
Blank: Without magnet S: With magnet			
Bore size			
20 25 32 40 50			
Stroke			
Bore size Stroke (mm)			
20, 25, 32 10 15 20			
40, 50 20 25 30			

① When the thread is standard, the code is blank.



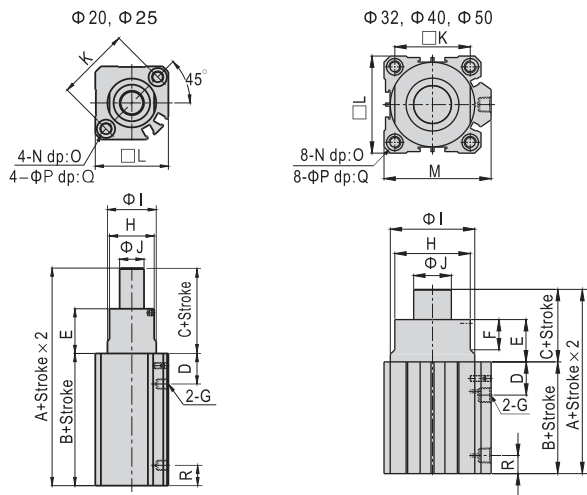
# Stopper cylinder



## TWQ Series

### Dimensions

#### Round rod (TWQ-C, TTQ-C)

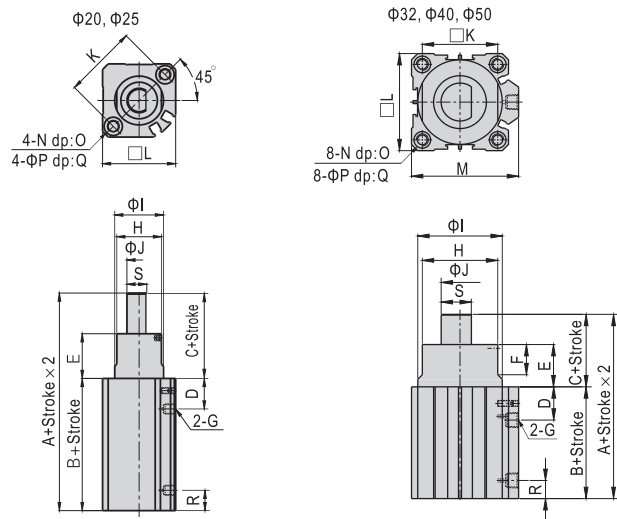


Bore size\Item	A	B	C	D	E	F	G	H	I
20	67	45	22	16.5	22	11	M5	22	24
25	68	48	20	18	20	15	M5	28	30
32	68	48	20	20	20	15	1/8"	34	36
40	80.5	52.5	28	20	28	18	1/8"	41	44
50	82	54	28	22	28	20	1/8"	50	56

Bore size\Item	J	K	L	M	N	O	P	Q	R
20	12	36	36	-	M6×1.0	10	9	7	9
25	16	40	40	-	M6×1.0	10	9	7	9
32	20	34	45	49.5	M6×1.0	10	9	7	10
40	25	40	53	57	M6×1.0	10	9	7	11
50	25	50	64	71	M8×1.25	14	11	8	12

Note: The type with magnet and the type without magnet have the same dimension.

#### Flat rod (TWQ-B, TTQ-B)



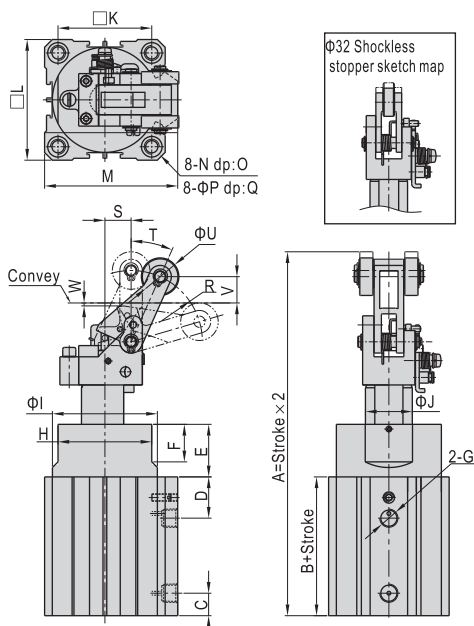
Bore size\Item	A	B	C	D	E	F	G	H	I	J
20	67	45	22	16.5	22	11	M5	22	24	12
25	68	48	20	18	20	15	M5	28	30	16
32	68	48	20	20	20	15	1/8"	34	36	20
40	80.5	52.5	28	20	28	18	1/8"	41	44	25
50	82	54	28	22	28	20	1/8"	50	56	25

Bore size\Item	K	L	M	N	O	P	Q	R	S
20	36	36	-	M6×1.0	10	9	7	9	10
25	40	40	-	M6×1.0	10	9	7	9	14
32	34	45	49.5	M6×1.0	10	9	7	10	18.5
40	40	53	57	M6×1.0	10	9	7	11	22.5
50	64	71	M8×1.25	14	11	8	12	22.5	

Note: The type with magnet and the type without magnet have the same dimension.

#### Shockless stopper (TWQ-K(F), TTQ-K(F))

Φ32, Φ40, Φ50

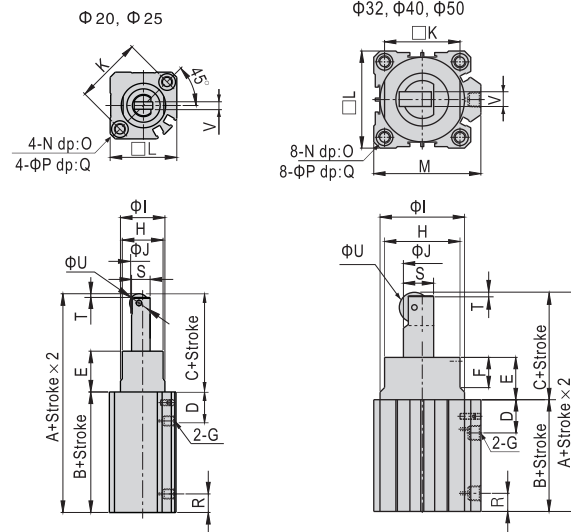


Bore size\Item	A	B	C	D	E	F	G	H	I	J	K
32	120.5	48	10	20	20	15	1/8"	34	36	20	34
40	152.5	52.5	11	20	28	18	1/8"	41	44	25	40
50	154	54	12	22	28	20	1/8"	50	56	25	50

Bore size\Item	L	M	N	O	P	Q	R	S	T	U	V	W
32	45	49.5	M6×1.0	10	9	7	24.5	11.5	28	15	4.4	1
40	53	57	M6×1.0	10	9	7	38	14	24	20	14	1.6
50	64	71	M8×1.25	14	11	8	38	14	24	20	14	1.6

Note: The type with magnet and the type without magnet have the same dimension.  
The type with self-lock and the type without self-lock have the same dimension.

#### Roller (TWQ-R, TTQ-R)



Bore size\Item	A	B	C	D	E	F	G	H	I	J	K
20	78	45	33	16.5	22	11	M5	22	24	12	36
25	81	48	33	18	20	15	M5	28	30	16	40
32	87	48	39	20	20	15	1/8"	34	36	20	34
40	103.5	52.5	51	20	28	18	1/8"	41	44	25	40
50	105	54	51	22	28	20	1/8"	50	56	25	50

Bore size\Item	L	M	N	O	P	Q	R	S	T	U	V
20	36	-	M6×1.0	10	9	7	9	10	2	10	4
25	40	-	M6×1.0	10	9	7	9	14	2	12	6
32	45	49.5	M6×1.0	10	9	7	10	18.5	3	20	8
40	53	57	M6×1.0	10	9	7	11	22.5	4	20	8
50	64	71	M8×1.25	14	11	8	12	22.5	4	20	8

Note: The type with magnet and the type without magnet have the same dimension.

