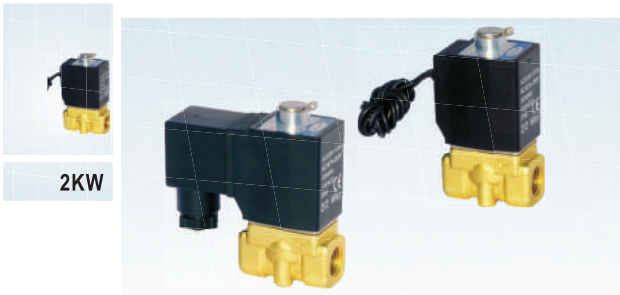


Fluid control valve(2/2 way)

2KW Series (Direct-acting and normally opened)



2KW

Symbol



Product feature

1. Direct acting and normally opened type 2/2 way solenoid valve. Its high sensibility allows it to change direction quickly;
2. It has wide pressure range, including extra high pressure (X), high pressure (H), standard and large volume(L) to choose from;
3. It is compact, small size and light weight. It is easy to install and dismantle.
4. The valve body is made of brass. Its coil has a Heat resistance classification of Class B. The standard seal material is FPM-F. Please contact us if other material are required.
5. The protection class of the coil is IP65 and there is a choice for grommet or terminal electrical entry.

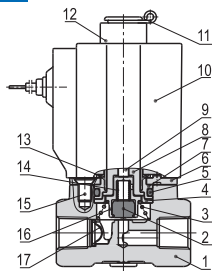
Valve's specification

Acting	Direct acting			
Initial stats	Normally opened			
Adaptable fluid ①	Air, Water, Oil			
Viscosity limit	Under 20CST			
Ambient and fluid temperature(°C)	Water	Air	Oil	Ambient
	Max. 80	90	80	70
	Min. 1	-20 ②	-10 ③	-20

- ① Note: Please refer to P125 for detail of other's fluid.
 ② Note: Dew point: -20(°C) or less. ③ Note: 50CST or less.

Inner structure

2KW030(Grommet)



No.	Item	No.	Item	No.	Item
1	Body	7	Fixed cap	13	Washer
2	Airtight ring	8	Electromagnet	14	Spring
3	Spring	9	Man dril	15	Screw
4	Bead flange	10	Coil assembly	16	Airtight bush
5	O-ring	11	E Clip	17	Filter
6	Fixed plate	12	Position ring		

Specification

Type\Item	Port size①	Orifice size (Φ mm)	Cv	Valid area or section(mm²)	Weight (g)	Max. operating pressure differentia		Proof pressure	
						MPa	psi	MPa	psi
2KWX030	-06 1/8"	1.5	0.10	1.8	315	2.0	300	3.0	450
	-08 1/4"				305				
2KWH030	-06 1/8"	2.0	0.18	3.0	315	1.5	220	3.0	450
	-08 1/4"				305				
2KW030	-06 1/8"	3.0	0.33	6.0	315	0.7	100	3.0	450
	-08 1/4"				305				
2KWL030	-06 1/8"	4.0	0.55	10.0	315	0.4	60	3.0	450
	-08 1/4"				305				
2KWX050	-10 3/8"	3.0	0.34	6.1	635	2.0	300	3.0	450
	-15 1/2"				615				
2KWH050	-10 3/8"	4.0	0.55	10.0	635	1.5	220	3.0	450
	-15 1/2"				615				
2KW050	-10 3/8"	5.0	0.83	15.0	635	0.7	100	3.0	450
	-15 1/2"				615				
2KWL050	-10 3/8"	7.0	1.40	25.0	635	0.4	60	3.0	450
	-15 1/2"				615				

- ① PT thread, NPT thread and G thread are available.
 ② The weight in the table is the terminal valve's weight, 2KW030 series grommet valve's weight is 10g less than terminal's. 2KW050series grommet valve's weight is 20g less than terminal's.

Specification of coil

Valve type	Coil type	Power type	Frequency (Hz)	Voltage range	Electrical entry	Power Consumption (VA/W)	Insulation	Temp. rise(°C)
2KW□030	CDA116 CLA116	AC	50	± 15%	Terminal (CDA)	15.0VA	Class B	50
			60			11.0VA		40
		DC	—	± 10%		6.5W		30
2KW□050	CDA170 CLA170	AC	50	± 15%	Grommet (CLA)	35.0VA	Class B	65
			60			30.0VA		60
		DC	—	± 10%		10.5W		40

Ordering code

2KW H 030 08 A □ P

- Model**: 2KW: 2/2 way direct-acting and normally opened
- Pressure condition**:
 - X: Extra high pressure
 - H: High pressure
 - Blank: Standard
 - L: Large volume
- Size series**:
 - 030: 030 Series
 - 050: 050 Series
- Port size**:
 - 06: 1/8"
 - 08: 1/4"
 - 10: 3/8"
 - 15: 1/2"
- Thread type**:
 - P: PT
 - T: NPT
 - G: G
- Electrical entry**:
 - Blank: Terminal
 - I: Grommet
- Voltage**:
 - A: AC220V
 - B: DC24V
 - C: AC110V
 - E: AC24V
 - F: DC12V

Ordering code of accessories

Ordering code of accessories is the same as 2S series valve's, Please refer to P100 for details of ordering code.

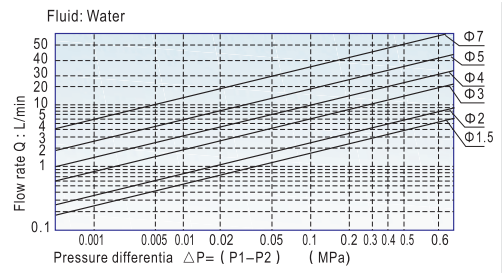
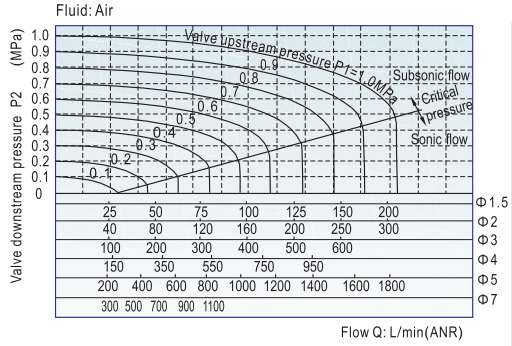


Fluid control valve(2/2 way)

2KW Series (Direct-acting and normally opened)

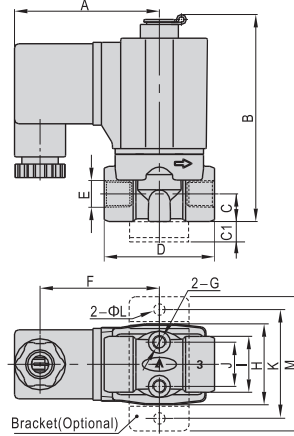


Flow chart

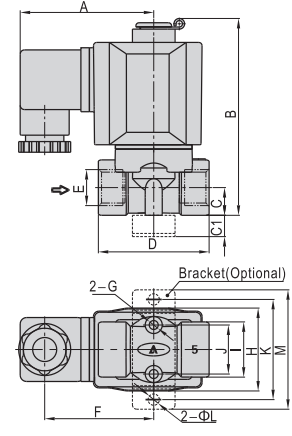


Dimensions

2KW□030(Terminal)

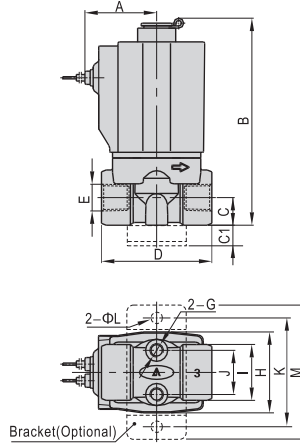


2KW□050(Terminal)

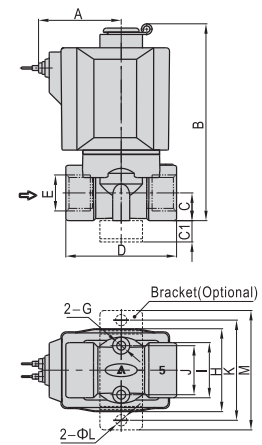


Type\Item	A	B	C	C1	D	E	F	G	H	I	J	K	L	M
2KW□030-06	52.5	76	10	10	40	1/8"	43.3	M5	29.3	20.2	16	40	5.3	49
2KW□030-08	52.5	76	10	10	40	1/4"	43.3	M5	29.3	20.2	16	40	5.3	49
2KW□050-10	62.7	92	13	10	52	3/8"	51.2	M5	39	26	23	48	5.3	56
2KW□050-15	62.7	92	13	10	52	1/2"	51.2	M5	39	26	23	48	5.3	56

2KW□030(Grommet)



2KW□050(Grommet)



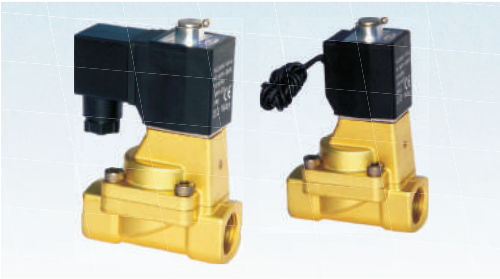
Type\Item	A	B	C	C1	D	E	G	H	I	J	K	L	M
2KW□030-06	26	76	10	10	40	1/8"	M5	29.3	20.2	16	40	5.3	49
2KW□030-08	26	76	10	10	40	1/4"	M5	29.3	20.2	16	40	5.3	49
2KW□050-10	39	92	13	10	52	3/8"	M5	39	26	23	48	5.3	56
2KW□050-15	39	92	13	10	52	1/2"	M5	39	26	23	48	5.3	56



Fluid control valve(2/2 way)



2KW Series (Internally piloted and normally opened)



Symbol



Product feature

1. Indirect acting (Internal pilot) and normally opened type 2/2 way solenoid valve. Its can change direction quickly and has large flow.
2. It is compact, small and light weight. It is easy to install and dismantle;
3. The valve body is made of brass. The coil has a Heat resistance classification of Class B. The standard seal material is FPM-F. Please contact us if other material are required.
4. The protection class of the coil is IP65 and there is a choice for grommet or terminal electrical entry.

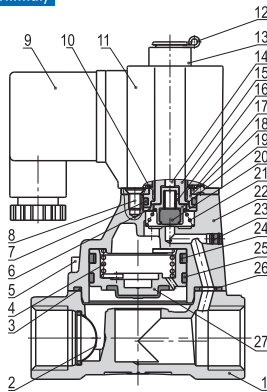
Valve's specification

Acting	Internally piloted				
Initial stats	Normally opened				
Adaptable fluid ①	Air, Water, Oil				
Viscosity limit	Under 20CST				
Ambient and fluid temperature(°C)	Water	Air	Oil	Ambient	
	Max. 80	90	80	70	70
	Min. 1	-20 ②	-10 ③	-20	

- ① Note: Please refer to P125 for detail of other's fluid.
 ② Note: Dew point: -20(°C) or less. ③ Note: 50CST or less.

Inner structure

2KW150(Terminal)



No.	Item	No.	Item	No.	Item	No.	Item
1	Body	8	Screw	15	Movable core	22	Cover
2	Filter	9	Connector	16	Spring	23	Plug
3	O-ring	10	Washer	17	Fixed plate	24	Bonnet spring
4	Spring	11	Coil assembly	18	Fixed cap	25	Wear ring
5	Screw	12	E Clip	19	Airtight bushing	26	Bushing
6	Clip	13	Position ring	20	Airtight ring	27	Piston
7	O-ring	14	Man drill	21	Spring		

Specification

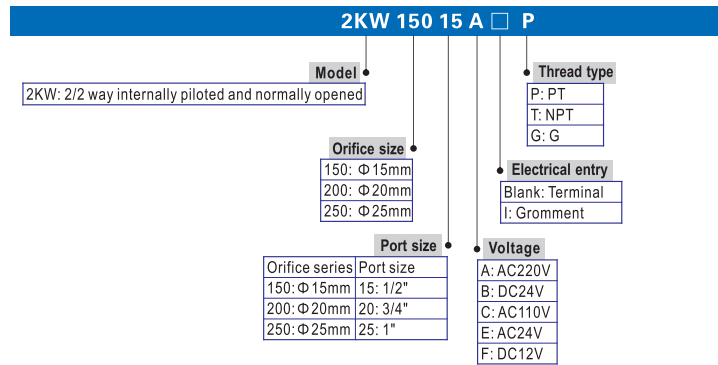
Type\Item	Port size①	Orifice size (Φmm)	Cv	Valid area or section(mm ²)	Weight ② (g)	Max. operating pressure differentia		Proof pressure	
						MPa	psi	MPa	psi
2KW150-15	1/2"	15.0	5.50	100.0	730	Max:0.7 Min:0.05	Max:100 Min:10	1.5	220
2KW200-20	3/4"	20.0	9.50	170.0	960				
2KW250-25	1"	25.0	12.50	220.0	1210				

- ① PT thread, NPT thread and G thread are available.
 ② The weight in the table is the terminal valve's weight, grommet valve's weight is 10g less than terminal's.

Specification of coil

Valve type	Coil type	Power type	Frequency (Hz)	Voltage range	Electrical entry	Power Consumption (VA/W)	Insulation	Temp. rise(°C)
2KW150	CDA116	AC	50	± 15%	Terminal (CDA)	15.0VA	Class B	50
2KW200	CLA116	DC	60		Grommet (CLA)	11.0VA		40
2KW250		DC	-	± 10%		6.5W		30

Ordering code



Ordering code of accessories

Ordering code of accessories is the same as 2S series valve's, Please refer to P102 for details of ordering code.

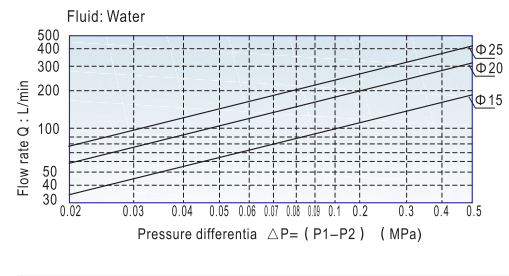
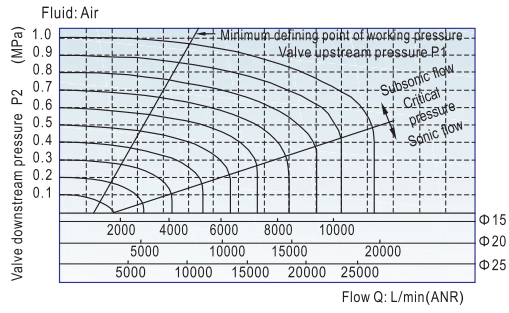


Fluid control valve(2/2 way)

2KW Series (Internally piloted and normally opened)

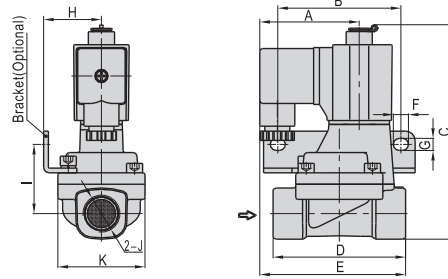


Flow chart



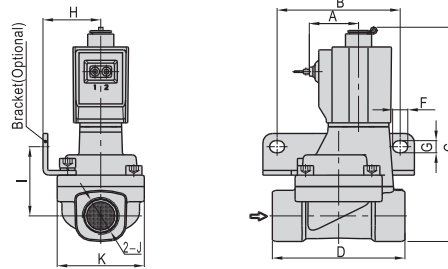
Dimensions

Terminal



Type\Item	A	B	C	D	E	F	G	H	I	J	K
2KW150-15	52.5	65	112.3	70	77	8	6.4	30.5	36.5	1/2"	46
2KW200-20	52.5	75	120.8	82	78.5	8	6.4	34	40	3/4"	53
2KW250-25	52.5	80	129.3	92	81	8	6.4	36	44.5	1"	59

Grommet



Type\Item	A	B	C	D	F	G	H	I	J	K
2KW150-15	26	65	112.3	70	8	6.4	30.5	36.5	1/2"	46
2KW200-20	26	75	120.8	82	8	6.4	34	40	3/4"	53
2KW250-25	26	80	129.3	92	8	6.4	36	44.5	1"	59

